

Northern Upland Chain Local Nature Partnership

Purpose and Terms of Reference

Introduction

The purpose of the Northern Upland Chain Local Nature Partnership (hereafter referred to as the LNP) is to act as a strategic body, with clear priorities focused on securing practical benefits for nature and for the natural economy of the uplands.

The LNP will plan and deliver strategic environmental action enabling the recognition of the value of biodiversity in social and economic as well as environmental terms. The LNP will facilitate coordinated decision making on the natural environment and members of the LNP will act jointly to deliver integrated outcomes that provide a wide range of benefits and ecosystem services.

Vision

The Northern Upland Chain will be:

- A place where our special natural qualities, including our breeding wading birds, our blanket bogs, our hay meadows, our tumbling rivers and our upland woodlands, are valued for their beauty, and for their contribution to the nation's economic, physical and spiritual well-being.
- A living and working upland landscape, a place where an environment-based economy thrives and where development and growth take place in balance with the conservation of the natural world on which they are reliant.
- A place where conservation bodies, land management organisations, public bodies, businesses and communities work in collaboration rather than competition and where political and landscape designation boundaries are crossed in order to achieve benefits for people and nature.
- A place that looks outward to new opportunities, new lessons and new partnerships with our neighbours, and not just in at ourselves.

Objectives

In working towards the vision for the Northern Upland Chain the LNP will:

- Conserve and enhance the natural heritage of the northern uplands, increasing resilience and ensuring these landscapes can meet the challenges of the future
- Support the economic and social well-being of our upland communities in ways which contribute to the conservation and enhancement of natural beauty
- Promote public understanding and enjoyment of the nature and culture of these areas, encouraging people to take action for their conservation
- Value, sustain and promote the benefits that the NUC provides for society, including clean air and water, food, carbon storage and other services vital to the nation's health and well-being.

Terms of reference and role of the Partnership

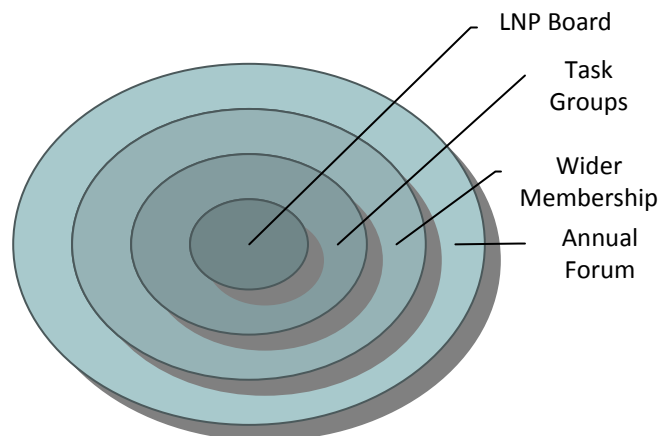
Geographical remit

The area covered by the Northern Upland Chain LNP will include the protected landscapes of Northumberland National Park, North Pennines AONB, Yorkshire Dales National Park and Nidderdale AONB. This chain of upland Protected Areas is broken only by the 'Tyne gap' between the North Pennines and the Northumberland National Park, containing the River Tyne that drains the surrounding catchments. The Northern Upland Chain Local Nature Partnership bridges this gap.

Structure of the Partnership

A flat structure has been agreed, with:

- A core group (the Board) of cross-sectoral representatives meeting four times a year initially
- (Mostly time-limited) task and finish group to support the delivery of practical programmes and strategic initiatives and which may be wound-up when their primary goal is achieved.
- A wider partnership membership which will feed in to the task and finish groups, receive and input to communications, monitoring etc.
- A wider forum which would meet annually



The diagram and the accompanying component description detail our structure as agreed with our many stakeholders

The LNP Board

The Northern Upland Chain LNP board will comprise of 19 members, each representative will have multiple interests, both thematic and geographical. Members will not represent a single organisation or interest.

Membership of the board will comprise of:

- The chair of the board
- One representative from each of the four Protected Landscape Management Bodies; Northumberland National Park Authority, North Pennines AONB Partnership, Yorkshire Dales National Park Authority, Nidderdale AONB Partnership
- Two representatives from the agricultural land management sector drawn from The National Farmers' Union and the Moorland Association
- Three representatives from the business sector drawn from Chambers of Commerce, LEP representation and a named representative from one of the area's three water companies

- Three representatives from the conservation sector
- One representative from a health organisation
- Three representatives from Defra's Arms Length bodies, Environment Agency, Natural England and Forestry Commission
- Two members elected from the Annual Forum to represent the wider community covered by the LNP

Task and Finish Groups

Drawn primarily from the wider membership, these groups will convene to develop and deliver the large scale collaborative projects and initiatives created through the LNP. The groups will have a Chair who is also an LNP Board member. Once their task is completed the group will be dissolved.

Wider Membership

The wider membership of the LNP includes all those bodies who have attended the capacity building sessions or who have otherwise expressed an interest in being involved. This is currently over 50 organisations, and is anticipated to grow over time. Our Communications Strategy sets out initial proposals for engagement with the wider membership, including e-newsletters, email updates, project meetings and face to face engagement.

It will be through engagement with our Annual Forum / Conference and the Task and Finish Groups that members of the Partnership will be able to make a difference and pursue their particular interests.

Benefits of membership will include the opportunity to influence the programme of work, to contribute to relevant project working groups and to benefit from the communication and intelligence sharing network.

Annual Forum

This event will be open to the public and will be advertised widely. Two seats on the Board will be elected from this forum, having been advertised in advance and voted for on the day. It will be an important way of raising the profile of the LNP, feeding back on its work and receiving ideas and input from others.

Function of the LNP

Partnership board

The LNP board will be responsible for:

- Establishing the vision and setting a direction for the LNP, defining priorities based on an ecosystem approach that will generate multiple benefits for nature and people.
- Engaging with regional and national organisations to promote and support the delivery of LNP objectives.
- Developing a funding strategy to facilitate joint funding bids that will deliver programmes across a wider area and ensure continuity of the LNP.
- Ensuring that the delivery of work across the LNP is co-ordinated in order to deliver greater habitat continuity.

- Strengthening the evidence base that underpins partners' management of the natural environment.
- Using the annual forum as a means to communicate and engage with a wider audience, promoting the identity of the LNP and also gathering feedback on future action and priorities as put forward by the public.
- Monitoring the performance of the partnership and the commitments it has made.
- Ensuring that the partnership works effectively.

Members Roles

Chair

To provide leadership for the board, and to act as an influential advocate for the Partnership's vision.

Principal Duties and Responsibilities

- To champion the Northern Upland Chain Local Nature Partnership and build support for the aims and priorities of the Partnership.
- To foster a supportive and productive partnership approach to deliver the Partnership's vision.
- To chair meetings of the LNP, having regard to agreed procedures.
- Represent the Partnership at appropriate events, meetings or functions.
- Act as a spokesperson for the Partnership where appropriate.
- The Chair should seek to fulfil their duties in a manner that is free from political bias and influence.

Board Members

To work on behalf of the LNP in developing and delivering its aims and objectives by:

- Contributing to identifying priority actions and setting targets for the partnership, utilising existing knowledge, contacts and methods available to their group or organisation.
- Contributing to the development and implementation, monitoring and evaluation of partnership policies, strategies and action plans.
- Working to influence the strategies and plans of relevant organisations and groups in order to complement the aims and purpose of the LNP.
- Representing the LNP and its objectives at public meetings, events, workshops and conferences as and when necessary and, promote and champion the work of the work of the LNP.
- Operating in an open, accessible, responsive and accountable manner at Partnership meetings.
- Reporting back to their organisation or partners on the outcome of LNP meetings.
- Ensuring they conduct themselves in a way that promotes a culture of mutual

respect.

- Promoting equality of opportunity in the work of the LNP.

Where appropriate Board members will also:

- Act as a link between the LNP board and the Task and Finish Groups.
- Act as a link between the LNP and other local authority partnerships to assist in developing a strategic vision based on a real understanding of need.

Operational arrangements

To ensure that the LNP Board is accountable to the Full Partnership the following operational agreements have been agreed by LNP Development Group:

- The Board will meet for times per year initially to set strategic direction and monitor progress.
- Normally, decisions will be reached by majority consensus.
- Terms of Reference will be reviewed annually.
- Membership of the proposed LNP will be reviewed annually.
- All members of the partnership can request an item for consideration to go on the agenda.
- The agenda and supporting reports will be circulated at least one week in advance to the whole membership, rather than just to the Board.
- Past agenda, minutes and reports will be available through an LNP website.

These operational arrangements will be reviewed once the LNP Board has been formalised to ensure that they are fit for purpose once implemented.

Secretariat

We have established a rotating secretariat between the four Protected Landscape partners. In the first year of operation the North Pennines AONB Partnership will provide the resources to undertake this role. The Board will review the role of the secretariat and how to support this function following the first year of establishment.

Funding the Partnership

Much of the cost of running the partnership will involve in-kind contributions of time, meeting venues etc. However, each of the four Protected Landscape management bodies involved in the developing the proposal have allocated resources from their budget to support the Partnership's operations in year 1. This is anticipated to continue.

As projects and programmes develop in the name of the LNP, project management fees should be able to be taken which will support the operation of the Partnership and in turn support further delivery of action on the ground.

Northern Upland Chain ~ Terms of Reference ~ May 2012 draft

To be adopted October 2012 ~ review by October 2013